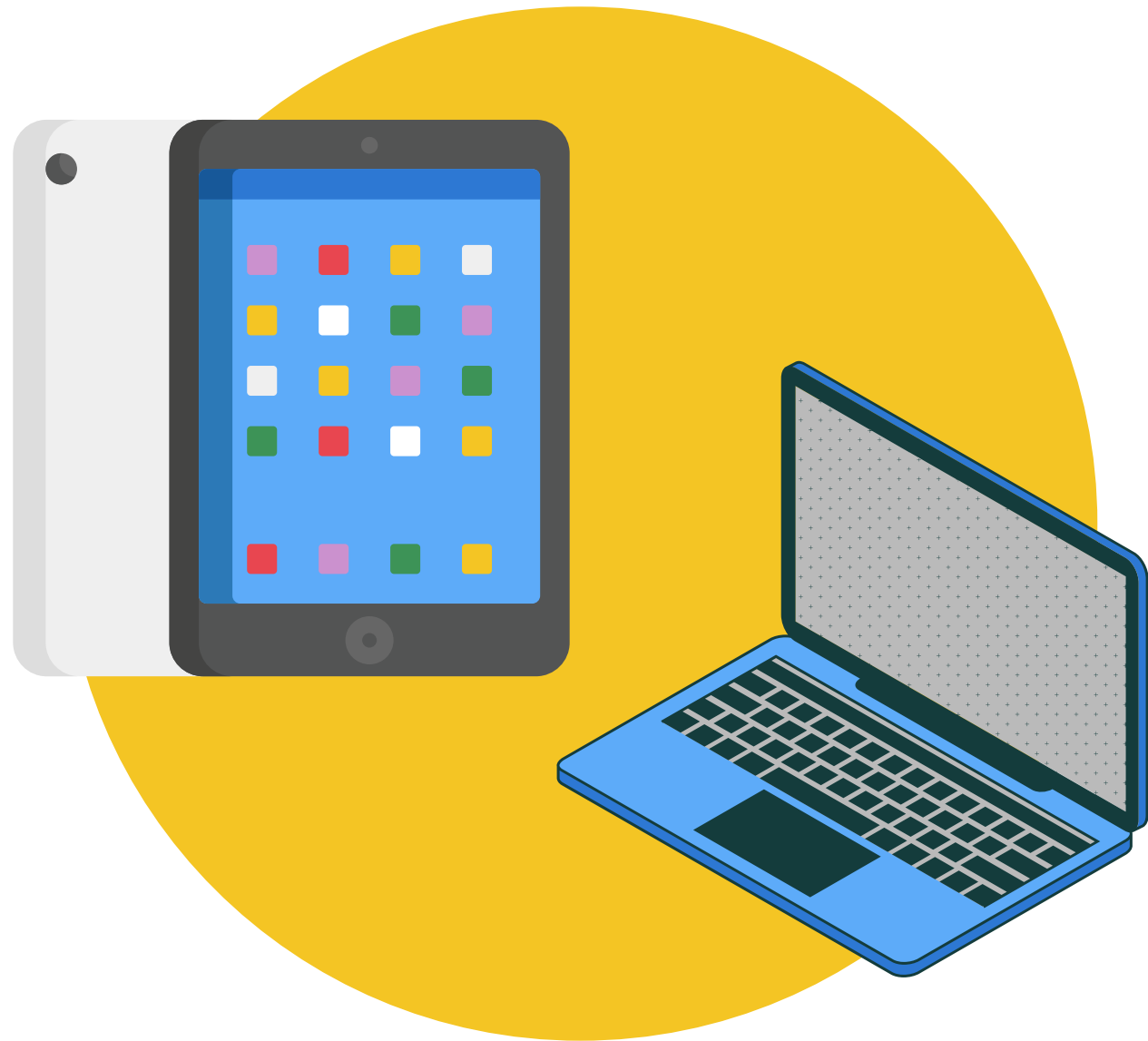


Pandemic Impacts on Education

Data from the 2021 - 2022 school year



1:1 programs increased

90% for middle and high schools

84% for elementary schools

Source: EdWeek Research Center



Drops in grade-level reading proficiency

Kindergartners dropped 8%

First graders dropped 10%

Second graders dropped 11%

Source: EdWeek



Less learning in remote vs in-person schools

47% vs 17% shortened school days

34% vs 11% reduced instructional time

15% vs 35% decreased amount of curriculum covered

Source: Rand Report