

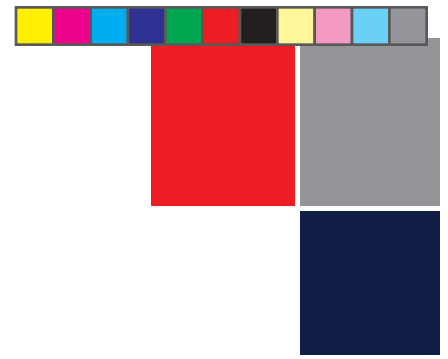


PRICE LIST 2023





Workstation 135



Features:

- 29" high
- 1 1/8" high-pressure laminated top w/3mm PVC edgeband
- Panoramic view
- 17-gauge drawer fronts w/full width integral pulls
- High-sided drawers accommodate hanging files
- Central locking center drawer
- BBF/FF pedestals
- Full-extension steel ball bearing suspension w/anti-rebound mechanism
- Master keyed removable core locks for onsite keying
- Two-wire management grommets
- Oversized adjustable glides
- Ships fully assembled (two pieces)

Options:

- Wire management trough
- Locks can be keyed alike
- ADA drawer pulls
- 6" conferencing overhang
- 12" conferencing bullet
- Post leg
- Locking casters

WORKSTATION 135 - DOUBLE PEDESTAL DESK

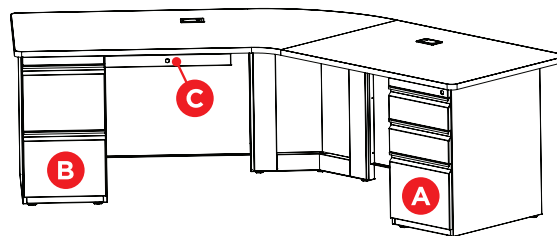
Model #	Size	Description	Cube	Wt.	List Price
WS8430__C__	84" x 30"	Two-piece top, curved main w/pedestal and central locking center drawer, return w/pedestal	43	310	\$ 3,957

WORKSTATION 135 - SINGLE PEDESTAL DESK

Model #	Size	Description	Cube	Wt.	List Price
WS8430__C__	84" x 30"	Two-piece top, curved main w/pedestal and central locking center drawer, return w/end panel	43	260	\$ 3,418
WS7230__C__	72" x 30"	One-piece top, w/BBF pedestal, central locking center drawer, and end panel	36	260	\$ 3,264

*Please specify pedestal configurations left to right. A=BBF, B=FF, C=Central locking center drawer, D=End panel, P=Post leg.

*Call for pricing on post leg.

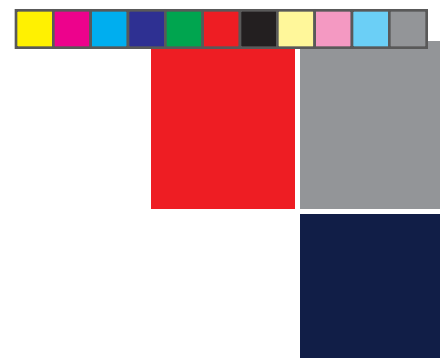


Example: WS8430BCA

All Perpetual Enterprises' products have a LIFETIME WARRANTY.



Perpetual Enterprises | 701 Fourth Avenue | Coraopolis, PA 15108
 Phone: 412-299-6356 | Fax: 412-299-6357 | www.pe-mfg.com



Triple Pedestal Desks

Features:

- 29" high
- 1 1/8" high-pressure laminated top w/3mm PVC edgeband
- 17-gauge drawer fronts w/full width integral pulls
- High-sided drawers accommodate hanging files
- Central locking center drawer
- Three pedestal for maximum filing capacity (BBF/FF)
- Full-extension steel ball bearing suspension w/anti-rebound mechanism
- Master keyed removable core locks for onsite keying
- Two-wire management grommets
- Oversized adjustable glides
- Ships fully assembled (two pieces)

Options:

- Wire management trough
- Locks can be keyed alike
- ADA drawer pulls
- 6" conferencing overhang
- 12" conferencing bullet
- Post leg
- Locking casters

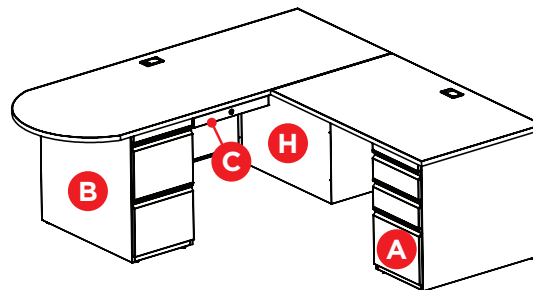
D-TOP TRIPLE PEDESTAL CONFERENCEING DESK

Model #	Size	Description	Cube	Wt.	List Price
TS7830__C__ and PR4224__ __	78" x 30"	D-Top main w/pedestal, central locking center drawer, forward facing pedestal locking	40	265	\$ 4,438
	42" x 24"	Right/left return w/pedestal locking	17	155	

* Please specify configuration from left to right: A=BBF, B=FF, C=Center drawer, G=BBF Forward facing, H=FF Forward facing, O=No panel (Standard unit/1 BBF and 2 FF).

* Return Sizes available: 36" x 24", 42" x 24", 48" x 24", 60" x 24" Call for additional sizes and pricing.

- B** Main Desk w/FF Pedestal
- C** Central Locking Center Drawer
- H** Forward Facing FF pedestal
- A** Return w/BBF Pedestal



Example: TS7830BCH w/PR4224OA

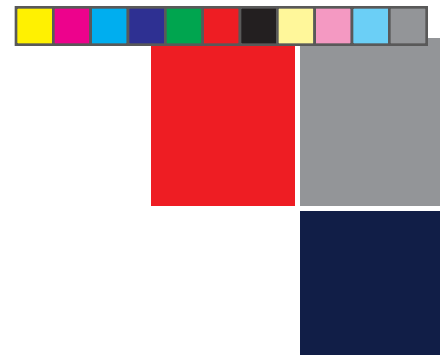
All Perpetual Enterprises' products have a LIFETIME WARRANTY.



Perpetual Enterprises | 701 Fourth Avenue | Coraopolis, PA 15108
 Phone: 412-299-6356 | Fax: 412-299-6357 | www.pe-mfg.com



L-Shaped Desk System

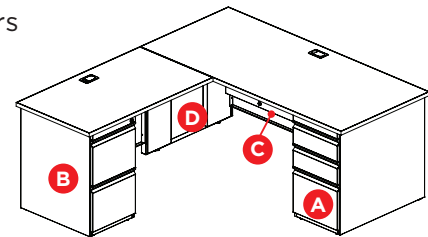


Features:

- 29" high
- 1 1/8" high-pressure laminated top w/3mm PVC edgeband
- 17-gauge drawer fronts w/full width integral pulls
- High-sided drawers accommodate hanging files
- Central locking center drawer
- BBF/FF pedestals
- Full-extension steel ball bearing suspension w/anti-rebound mechanism
- Master keyed removable core locks for onsite keying
- Two-wire management grommets
- Oversized adjustable glides
- Ships fully assembled (two pieces)

Options:

- Wire management trough
- Locks can be keyed alike
- ADA drawer pulls
- 6" conferencing overhang
- Bow front top
- 12" conferencing bullet
- Locking casters



**Example: PS6630DCA
w/PR4224B0**

SINGLE PEDESTAL DESK - Add return to form an L-shaped desk

Model #	Size	Description	Cube	Wt.	List Price
PS7236__C__	72" x 36"	Pedestal, central locking center drawer, end panel	44	225	\$ 2,327
PS7230__C__	72" x 30"	Pedestal, central locking center drawer, end panel	37	215	\$ 2,160
PS6630__C__	66" x 30"	Pedestal, central locking center drawer, end panel	34	200	\$ 2,103
PS6030__C__	60" x 30"	Pedestal, central locking center drawer, end panel	31	180	\$ 2,069
PS4830__C__	48" x 30"	Pedestal, central locking center drawer, end panel	24	165	\$ 1,996
PS7224__C__	72" x 24"	Pedestal, central locking center drawer, end panel	29	175	\$ 2,060
PS6624__C__	66" x 24"	Pedestal, central locking center drawer, end panel	27	170	\$ 1,996
PS6024__C__	60" x 24"	Pedestal, central locking center drawer, end panel	24	165	\$ 1,918

* Please specify configuration from left to right: A=BBF, B=FF, C=Center drawer, D=End panel (Standard w/1 BBF).

SINGLE PEDESTAL RETURN - A left pedestal desk requires a right pedestal return and vice versa

Model #	Size	Description	Cube	Wt.	List Price
PR6024__ __	60" x 24"	L/R locking pedestal return	24	175	\$ 1,760
PR4824__ __	48" x 24"	L/R locking pedestal return	20	161	\$ 1,656
PR4224__ __	42" x 24"	L/R locking pedestal return	17	155	\$ 1,618
PR3624__ __	36" x 24"	L/R locking pedestal return	15	149	\$ 1,584

* Please specify configuration from left to right: A=BBF, B=FF, O=No end panel (Standard w/1 FF).

* Please call if center drawer is required.

* Call for additional sizes and pricing.

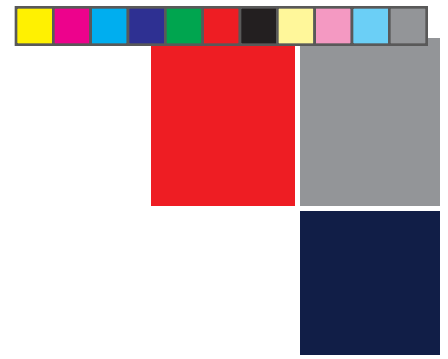
All Perpetual Enterprises' products have a LIFETIME WARRANTY.



Perpetual Enterprises | 701 Fourth Avenue | Coraopolis, PA 15108
Phone: 412-299-6356 | Fax: 412-299-6357 | www.pe-mfg.com



D-Top Bookcase Desks



Features:

- 29" high
- 1 1/8" high-pressure laminated top w/3mm PVC edgeband
- 12" conferencing bullet
- 30" bookcase w/adjustable shelf
- 17-gauge drawer fronts w/full width integral pulls
- High-sided drawers accommodate hanging files
- Central locking center drawer
- BBF or FF pedestal
- Full-extension steel ball bearing suspension w/anti-rebound mechanism
- Master keyed removable core locks for onsite keying
- Wire management grommet
- Oversized adjustable glides
- Ships in two pieces

Options:

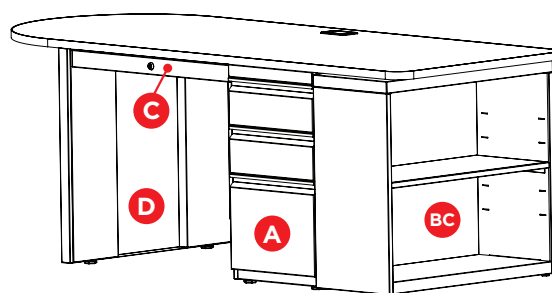
- Wire management trough
- Locks can be keyed alike
- ADA drawer pulls
- 6" conferencing overhang
- Locking casters
- Post leg

D-TOP BOOKCASE DESK					
Model #	Size	Description	Cube	Wt.	List Price
ES7230__C__-BC	72" x 30"	Single pedestal D-Top desk w/end panel, central locking center drawer, and BBF w/30" bookcase	37	226	\$ 2,405

* Please specify configuration from left to right: A=BBF, B=FF, C=Center drawer, D=End panel, BC=Bookcase (Standard w/BBF).

* Bookcase will sit adjacent to the pedestal (D-Top will be in opposite position).

* Call for post leg specifications and pricing.



Example: ES7230DCA-BC

All Perpetual Enterprises' products have a LIFETIME WARRANTY.



Perpetual Enterprises | 701 Fourth Avenue | Coraopolis, PA 15108
 Phone: 412-299-6356 | Fax: 412-299-6357 | www.pe-mfg.com



D-Top Double Pedestal Desks



Features:

- 29" high
- 1 1/8" high-pressure laminated top w/3mm PVC edgeband
- 12" conferencing bullet
- 17-gauge drawer fronts w/full width integral pulls
- High-sided drawers accommodate hanging files
- Central locking center drawer
- BBF/FF pedestals
- Full-extension steel ball bearing suspension w/anti-rebound mechanism
- Master keyed removable core locks for onsite keying
- Wire management grommet
- Oversized adjustable glides
- Ships fully assembled

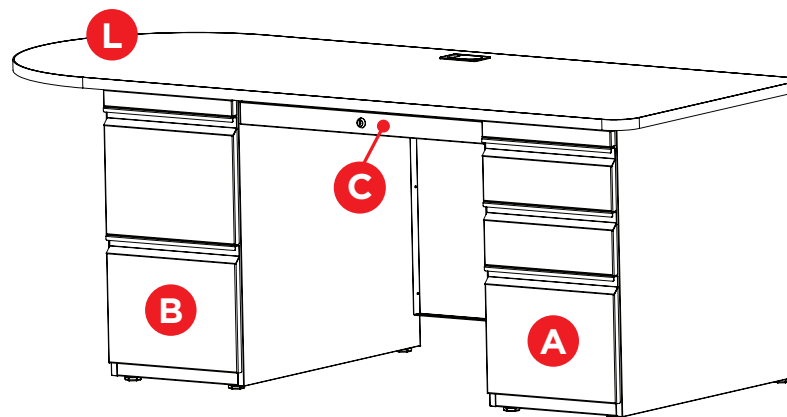
Options:

- Wire management trough
- Locks can be keyed alike
- ADA drawer pulls
- 6" conferencing overhang
- Locking casters

D-TOP DOUBLE PEDESTAL DESK					
Model #	Size	Description	Cube	Wt.	List Price
ES7230__C__R/L	72" x 30"	Double pedestal D-top desk w/pedestal left, central locking center drawer, and pedestal right	37	250	\$ 2,612

* Please specify configuration from left to right: A=BBF, B=FF, C=Center drawer (Standard w/1 BBF and 1 FF).

* Specify D-Top orientation - R/L.



Example: ES8430BCA/L

All Perpetual Enterprises' products have a LIFETIME WARRANTY.



Perpetual Enterprises | 701 Fourth Avenue | Coraopolis, PA 15108
 Phone: 412-299-6356 | Fax: 412-299-6357 | www.pe-mfg.com



D-Top Single Pedestal Desks



Features:

- 29" high
- 1 1/8" high-pressure laminated top w/3mm PVC edgeband
- 12" conferencing bullet
- 17-gauge drawer fronts w/full width integral pulls
- High-sided drawers accommodate hanging files
- Central locking center drawer
- BBF or FF pedestal
- Full-extension steel ball bearing suspension w/anti-rebound mechanism
- Master keyed removable core locks for onsite keying
- Wire management grommet
- Oversized adjustable glides
- Ships fully assembled

Options:

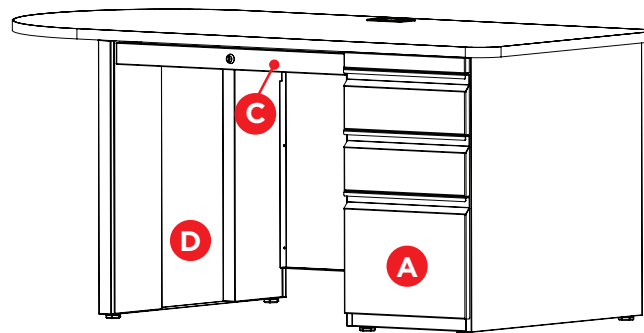
- Wire management trough
- Locks can be keyed alike
- ADA drawer pulls
- 6" conferencing overhang
- Locking casters
- Post leg

D-TOP SINGLE PEDESTAL DESK					
Model #	Size	Description	Cube	Wt.	List Price
ES7230__C__	72" x 30"	D-top desk w/end panel, central locking center drawer, pedestal	37	225	\$2,174
ES6630__C__	66" x 30"	D-top desk w/end panel, central locking center drawer, pedestal	34	215	\$ 2,117
ES6030__C__	60" x 30"	D-top desk w/end panel, central locking center drawer, pedestal	31	200	\$ 2,083

* Please specify configuration from left to right: A=BBF, B=FF, C=Center drawer, D= End panel (Standard w/1 BBF).

* D-Top sits over end panel.

* Call for post leg pricing.



Example: ES7230DCA

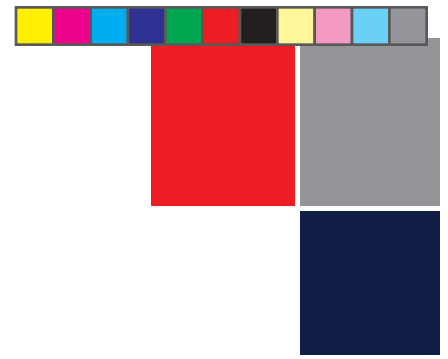
All Perpetual Enterprises' products have a LIFETIME WARRANTY.



Perpetual Enterprises | 701 Fourth Avenue | Coraopolis, PA 15108
 Phone: 412-299-6356 | Fax: 412-299-6357 | www.pe-mfg.com



Double Pedestal Desks



Features:

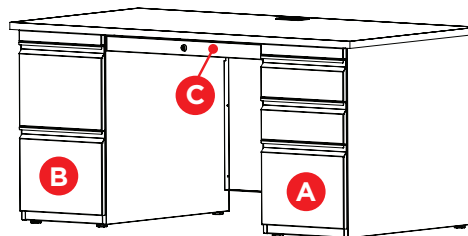
- 29" high
- 1 1/8" high-pressure laminated top w/3mm PVC edgeband
- 17-gauge drawer fronts w/full width integral pulls
- High-sided drawers accommodate hanging files
- Central locking center drawer
- BBF/FF pedestals
- Full-extension steel ball bearing suspension w/anti-rebound mechanism
- Master keyed removable core locks for onsite keying
- Wire management grommet
- Oversized adjustable glides
- Ships fully assembled

Options:

- Wire management trough
- Locks can be keyed alike
- ADA drawer pulls
- 6" conferencing overhang
- Bow front top
- 12" conferencing bullet
- Locking casters

DOUBLE PEDESTAL DESK					
Model #	Size	Description	Cube	Wt.	List Price
PD7236__C__	72" x 36"	Double pedestal desk w/central locking center drawer	44	275	\$ 2,809
PD7230__C__	72" x 30"	Double pedestal desk w/central locking center drawer	37	265	\$ 2,714
PD6630__C__	66" x 30"	Double pedestal desk w/central locking center drawer	34	230	\$ 2,693
PD6030__C__	60" x 30"	Double pedestal desk w/central locking center drawer	31	220	\$ 2,624
PD7224__C__	72" x 24"	Double pedestal desk w/central locking center drawer	29	200	\$ 2,521
PD6624__C__	66" x 24"	Double pedestal desk w/central locking center drawer	27	195	\$ 2,495
PD6024__C__	60" x 24"	Double pedestal desk w/central locking center drawer	24	190	\$ 2,434

* Please specify configuration from left to right: A=BBF, B=FF, C=Center drawer (Standard w/1 BBF and 1 FF).



Example: PD7236BCA

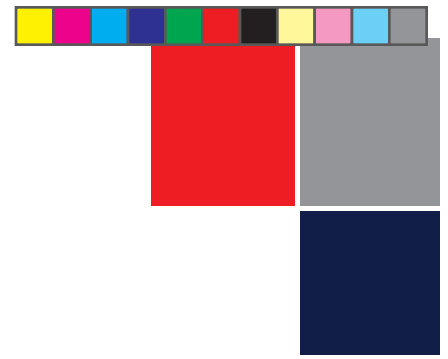
All Perpetual Enterprises' products have a LIFETIME WARRANTY.



Perpetual Enterprises | 701 Fourth Avenue | Coraopolis, PA 15108
 Phone: 412-299-6356 | Fax: 412-299-6357 | www.pe-mfg.com



Single Pedestal Desks

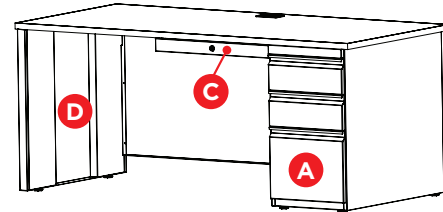


Features:

- 29" high
- 1 1/8" high-pressure laminated top w/3mm PVC edgeband
- 17-gauge drawer fronts w/full width integral pulls
- High-sided drawers accommodate hanging files
- Central locking center drawer
- BBF/FF pedestals
- Full-extension steel ball bearing suspension w/anti-rebound mechanism
- Master keyed removable core locks for onsite keying
- Wire management grommet
- Oversized adjustable glides
- Ships fully assembled

Options:

- Wire management trough
- Locks can be keyed alike
- ADA drawer pulls
- 6" conferencing overhang
- Bow front top
- 12" conferencing bullet
- Locking casters



Example: PS7236DCA

SINGLE PEDESTAL DESK					
Model #	Size	Description	Cube	Wt.	List Price
PS7236__C__	72" x 36"	Single pedestal desk w/central locking center drawer and end panel	44	225	\$ 2,327
PS7230__C__	72" x 30"	Single pedestal desk w/central locking center drawer and end panel	37	215	\$ 2,160
PS6630__C__	66" x 30"	Single pedestal desk w/central locking center drawer and end panel	34	200	\$ 2,103
PS6030__C__	60" x 30"	Single pedestal desk w/central locking center drawer and end panel	31	180	\$ 2,069
PS4830__C__	48" x 30"	Single pedestal desk w/central locking center drawer and end panel	24	165	\$ 1,996
PS7224__C__	72" x 24"	Single pedestal desk w/central locking center drawer and end panel	29	175	\$ 2,060
PS6624__C__	66" x 24"	Single pedestal desk w/central locking center drawer and end panel	27	175	\$ 1,996
PS6024__C__	60" x 24"	Single pedestal desk w/central locking center drawer and end panel	24	165	\$ 1,918

* Please specify configuration from left to right: A=BBF, B=FF, C=Center drawer, D=End panel (Standard w/1 BBF).

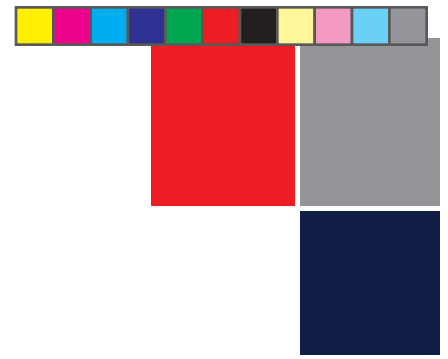
All Perpetual Enterprises' products have a LIFETIME WARRANTY.



Perpetual Enterprises | 701 Fourth Avenue | Coraopolis, PA 15108
 Phone: 412-299-6356 | Fax: 412-299-6357 | www.pe-mfg.com



C-Leg Computer Desks

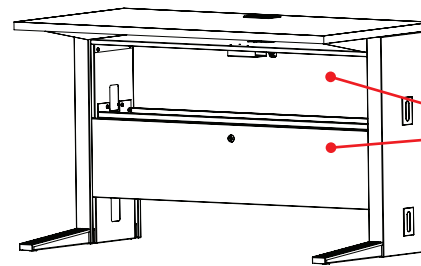


Features:

- 29" high
- 1 1/8" high-pressure laminated top w/3mm PVC edgeband
- Locking garage-style doors for wire access (computer desk)
- Master keyed removable core locks for onsite keying
- Wire management grommet
- Oversized adjustable glides
- Ships fully assembled

Options:

- Wire management trough (C-leg desk)
- Two-wire management ports per leg
- Locking center drawer and keyboard options
- Locks can be keyed alike
- Locking casters



Front and rear vertical sliding doors

Example: CT4830

COMPUTER DESK					
Model #	Size	Description	Cube	Wt.	List Price
CT4830	48" x 30"	Computer table w/lockable wire management	29	95	\$ 1,559
CT4824	48" x 24"	Computer table w/lockable wire management	20	80	\$ 1,446

* Call for custom sizes.

C-LEG DESK SHELL					
Model #	Size	Description	Cube	Wt.	List Price
CL7230	72" x 30"	C-leg desk shell	37	150	\$ 1,554
CL6630	66" x 30"	C-leg desk shell	34	139	\$ 1,442
CL6030	60" x 30"	C-leg desk shell	31	125	\$ 1,373
CL4830	48" x 30"	C-leg desk shell	24	90	\$ 1,282
CL3630	36" x 30"	C-leg desk shell	19	75	\$ 1,171
CL7224	72" x 24"	C-leg desk shell	29	130	\$ 1,411
CL6624	66" x 24"	C-leg desk shell	27	121	\$ 1,299
CL6024	60" x 24"	C-leg desk shell	24	109	\$ 1,250
CL4824	48" x 24"	C-leg desk shell	20	80	\$ 1,167
CL3624	36" x 24"	C-leg desk shell	15	70	\$ 1,072

* Call for pricing on options.

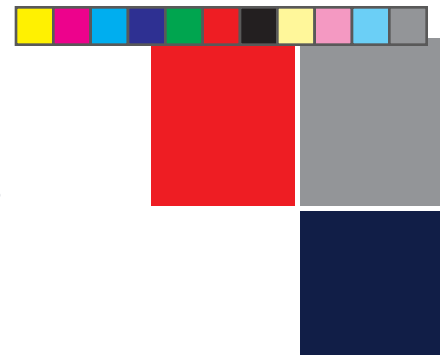
All Perpetual Enterprises' products have a LIFETIME WARRANTY.



Perpetual Enterprises | 701 Fourth Avenue | Coraopolis, PA 15108
 Phone: 412-299-6356 | Fax: 412-299-6357 | www.pe-mfg.com



Shell and Corner Desks



Features:

- 29" high
- 1 1/8" high-pressure laminated top w/3mm PVC edgeband
- Wire management grommet
- Oversized adjustable glides
- Ships fully assembled

Options:

- Wire management trough
- Locking center drawer
- 6" conferencing overhang
- Bow front top
- Modest Panel (D-Top)
- Post leg (D-Top)
- 12" conferencing bullet
- Locking casters

DESK SHELL					
Model #	Size	Description	Cube	Wt.	List Price
PD7236D0D	72" x 36"	Desk shell w/one wire management grommet	44	122	\$ 1,630
PD7230D0D	72" x 30"	Desk shell w/one wire management grommet	37	113	\$ 1,552
PD6630D0D	66" x 30"	Desk shell w/one wire management grommet	34	110	\$ 1,441
PD6030D0D	60" x 30"	Desk shell w/one wire management grommet	31	102	\$ 1,373
PD4830D0D	48" x 30"	Desk shell w/one wire management grommet	24	80	\$ 1,282
PD7224D0D	72" x 24"	Desk shell w/one wire management grommet	29	115	\$ 1,476
PD6624D0D	66" x 24"	Desk shell w/one wire management grommet	27	105	\$ 1,369
PD6024D0D	60" x 24"	Desk shell w/one wire management grommet	24	90	\$ 1,306
PD4824D0D	48" x 24"	Desk shell w/one wire management grommet	20	70	\$ 1,219

* Please call for additional sizes.

CORNER DESK					
Model #	Size	Description	Cube	Wt.	List Price
CR4242-24	42" x 42" x 24"	42" Corner desk w/25" straight front, 24" side, w/one wire management grommet	30	120	\$ 2,128
CR3636-24	36" x 36" x 24"	36" Corner desk w/17" straight front, 24" side, w/one wire management grommet	22	102	\$ 1,962

D-TOP DESK SHELL					
Model #	Size	Description	Cube	Wt.	List Price
ES7236__0__	72" x 36"	D-Top desk w/T-leg panel and post leg	44	135	\$ 2,182
ES7230__0__	72" x 30"	D-Top desk w/T-leg panel and post leg	37	121	\$ 2,107
ES6630__0__	66" x 30"	D-Top desk w/T-leg panel and post leg	34	118	\$ 2,004

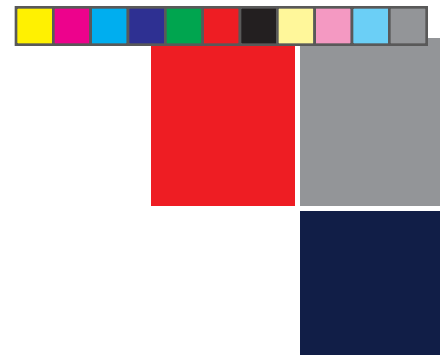
* Please call for additional sizes and configurations.

* T=T- Panel leg, P=Post leg. D-Top sits over Post leg.

All Perpetual Enterprises' products have a LIFETIME WARRANTY.



Perpetual Enterprises | 701 Fourth Avenue | Coraopolis, PA 15108
 Phone: 412-299-6356 | Fax: 412-299-6357 | www.pe-mfg.com



Credenzas

Features:

- Cases are 29" high and 24" deep
- Width varies w/components selected
- 1 1/8" high-pressure laminated top w/3mm PVC edgeband
- BBF/FF pedestal options
- 17-gauge drawer fronts w/full width integral pulls
- High-sided drawers accommodate hanging files
- Full-extension steel ball bearing suspension w/anti-rebound mechanism
- Master keyed removable core locks for onsite keying
- Oversized adjustable glides
- Ships fully assembled

Options:

- Two-shelf bookcase (30"W or 36"W)
- Lockable center cabinet w/heavy-duty adjustable hinges or sliding doors
- Locking center drawer
- Locks can be keyed alike
- Wire management grommet
- Wire management trough
- ADA drawer pulls
- Locking casters

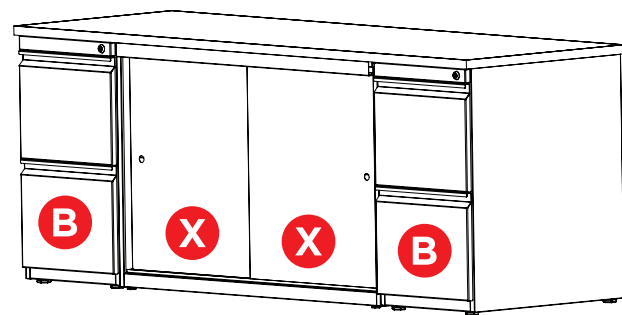
CREDENZA					
Model #	Size	Description	Cube	Wt.	List Price
CC____	__H x __D x __W	Custom credenza/dimensions defined by components chosen	Approx. 29	Varies	\$_____

* Please call for pricing. All credenzas are configured according to customer requirements and are custom manufactured.

* Refer to the chart below when selecting options. Specify from left to right.

* Size will depend upon the components chosen.

CREDENZA COMPONENTS LEGEND	
A	Box Box File pedestals (BBF)
B	File File pedestals (FF)
C	Center drawer w/knee space
X	Cabinet w/sliding doors
Y	Cabinet w/hinged doors
L	Bookcase



Example: CC BXXB

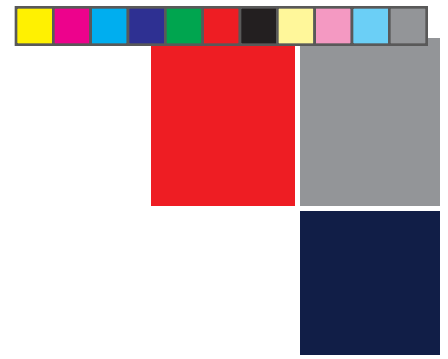
All Perpetual Enterprises' products have a LIFETIME WARRANTY.



Perpetual Enterprises | 701 Fourth Avenue | Coraopolis, PA 15108
 Phone: 412-299-6356 | Fax: 412-299-6357 | www.pe-mfg.com



Returns and Bridges



Features:

- 29" high
- 1 1/8" high-pressure laminated top w/3mm PVC edgeband
- 17-gauge drawer fronts w/full width integral pulls
- High-sided drawers accommodate hanging files
- BBF/FF pedestals
- Full-extension steel ball bearing suspension w/anti-rebound mechanism
- Master keyed removable core locks for onsite keying
- Wire management grommet
- Oversized adjustable glides
- Ships fully assembled

Options:

- Wire management trough
- Locking center drawer or keyboard tray
- Locks can be keyed alike
- ADA drawer pulls
- 12" conferencing bullet
- Locking casters

PEDESTAL RETURN - left ped. desk requires a right ped. return and vice versa

Model #	Size	Description	Cube	Wt.	List Price
PR6024 __ __	60" x 24"	Locking pedestal return	24	175	\$ 1,809
PR4824 __ __	48" x 24"	Locking pedestal return	20	161	\$ 1,702
PR4224 __ __	42" x 24"	Locking pedestal return	17	155	\$ 1,642
PR3624 __ __	36" x 24"	Locking pedestal return	15	149	\$ 1,584

- * Please specify configuration from to left to right: A=BBF, B=FF, O= No panel. (Standard w/1 FF)
- * Call for additional sizes and pricing.
- * Call if center drawer is required.

RETURN SHELL - left ped. desk requires a right return and vice versa

Model #	Size	Description	Cube	Wt.	List Price
PR6024 __ __	60" x 24"	Return shell	24	120	\$ 1,124
PR4824 __ __	48" x 24"	Return shell	20	110	\$ 1,012
PR4224 __ __	42" x 24"	Return shell	17	104	\$ 954
PR3624 __ __	36" x 24"	Return shell	15	93	\$ 893

- * Please specify configuration from left to right: D= End panel, O=No end panel.
- * Call for additional sizes and pricing.
- * Call if center drawer is required.

BRIDGE UNIT

Model #	Size	Description	Cube	Wt.	List Price
PB4824	48" x 24"	Bridge unit w/full modesty panel	4	60	\$ 883
PB4224	42" x 24"	Bridge unit w/full modesty panel	4	55	\$ 848

- * Call for additional sizes and pricing.
- * Call if center drawer is required.

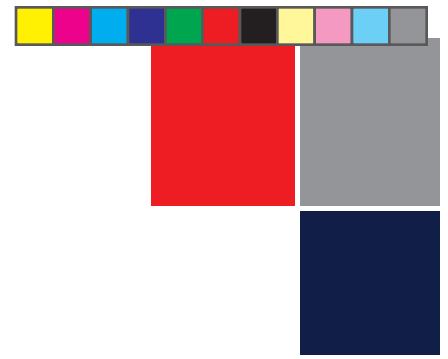
All Perpetual Enterprises' products have a LIFETIME WARRANTY.



Perpetual Enterprises | 701 Fourth Avenue | Coraopolis, PA 15108
 Phone: 412-299-6356 | Fax: 412-299-6357 | www.pe-mfg.com



Fixed Pedestal Files



Features:

- 27" high
- BF/BBF/FF pedestals
- Heavy gauge steel, one-piece case wrappers
- Four vertical uprights
- Reinforced steel base
- 17-gauge drawer fronts w/full width integral pulls
- High-sided drawers accommodate hanging files

- Full-extension steel ball bearing suspension w/anti-rebound mechanism
- Master keyed removable core locks for onsite keying
- Oversized adjustable glides
- Ships fully assembled

Options:

- Laminated top
- Cushioned seat
- Locks can be keyed alike
- ADA drawer pulls
- Counter-balance kit

HEAVY DUTY CLOSED-TOP FIXED PEDESTALS

Model #	Size	Description	Cube	Wt.	List Price
FPC30A-15	30" x 15"	27" H closed-top BBF pedestal w/adjustable glides	7	81	\$ 769
FPC30B-15	30" x 15"	27" H closed-top FF pedestal w/adjustable glides	7	76	\$ 707
FPC24A-15	24" x 15"	27" H closed-top BBF pedestal w/adjustable glides	6	76	\$ 702
FPC24B-15	24" x 15"	27" H closed-top FF pedestal w/adjustable glides	6	70	\$ 643
FPC18A-15	18" x 15"	27" H closed-top BBF pedestal w/adjustable glides	5	49	\$ 658
FPC18B-15	18" x 15"	27" H closed-top FF pedestal w/adjustable glides	5	46	\$ 605

* Please call for cushion options.

HEAVY DUTY OPEN-TOP FIXED PEDESTALS

Model #	Size	Description	Cube	Wt.	List Price
FPO30A-15	30" x 15"	27" H open-top BBF pedestal w/adjustable glides	7	75	\$ 748
FPO30B-15	30" x 15"	27" H open-top FF pedestal w/adjustable glides	7	70	\$ 689
FPO24A-15	24" x 15"	27" H open-top BBF pedestal w/adjustable glides	6	70	\$ 689
FPO24B-15	24" x 15"	27" H open-top FF pedestal w/adjustable glides	6	65	\$ 625
FPO18A-15	18" x 15"	27" H open-top BBF pedestal w/adjustable glides	5	65	\$ 642
FPO18B-15	18" x 15"	27" H open-top FF pedestal w/adjustable glides	5	60	\$ 590
FPO24E-15	24" x 15"	19" H open-top BF hanging pedestal	4	45	\$ 572
FPO18E-15	18" x 15"	19" H open-top BF hanging pedestal	3	40	\$ 552

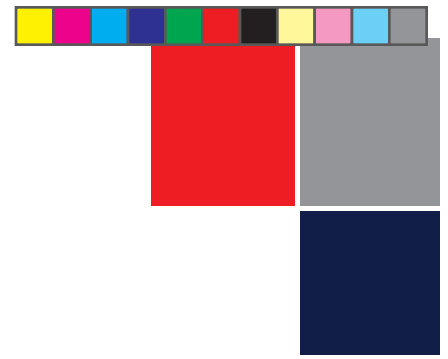
All Perpetual Enterprises' products have a LIFETIME WARRANTY.



Perpetual Enterprises | 701 Fourth Avenue | Coraopolis, PA 15108
 Phone: 412-299-6356 | Fax: 412-299-6357 | www.pe-mfg.com



Mobile Pedestal Files



Features:

- 27" high
- BF/BBF/FF pedestals
- Concealed casters
- Heavy gauge steel, one-piece case wrappers
- Four vertical uprights
- Reinforced steel base
- 17-gauge drawer fronts w/full width integral pulls

- High-sided drawers accommodate hanging files
- Full-extension steel ball bearing suspension w/anti-rebound mechanism
- Master keyed removable core locks for onsite keying
- Oversized adjustable glides
- Ships fully assembled

Options:

- Laminated top
- Cushioned seat
- Locks can be keyed alike
- ADA drawer pulls
- Counter-balance kit

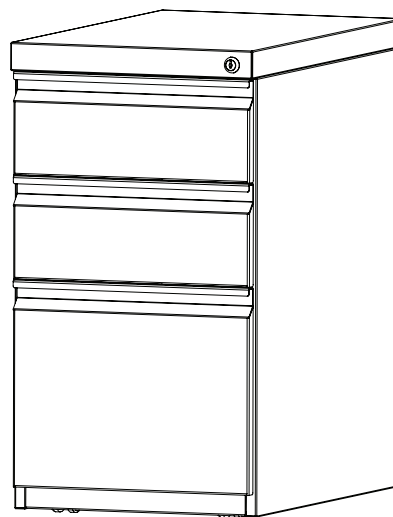
HEAVY DUTY MOBILE PEDESTALS - LETTER

Model #	Size	Description	Cube	Wt.	List Price
MP30A-15	30" x 15"	27" H closed top BBF mobile pedestal w/concealed casters	7	81	\$ 883
MP30B-15	30" x 15"	27" H closed top FF mobile pedestal w/concealed casters	7	76	\$ 839
MP24A-15	24" x 15"	27" H closed top BBF mobile pedestal w/concealed casters	6	76	\$ 820
MP24B-15	24" x 15"	27" H closed top FF mobile pedestal w/concealed casters	6	70	\$ 782
MP18A-15	18" x 15"	27" H closed top BBF mobile pedestal w/concealed casters	5	50	\$ 755
MP18B-15	18" x 15"	27" H closed top FF mobile pedestal w/concealed casters	5	47	\$ 723

*BF and custom mobile pedestal available.

*Optional cushioned seat.

*Call for more information.



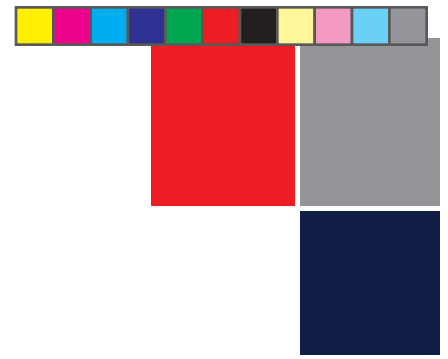
All Perpetual Enterprises' products have a LIFETIME WARRANTY.



Perpetual Enterprises | 701 Fourth Avenue | Coraopolis, PA 15108
 Phone: 412-299-6356 | Fax: 412-299-6357 | www.pe-mfg.com



Hutches



Features:

- 36 1/2" high
- 15"H x 15"D cabinet
- 21" clearance from desktop to shelf
- Over-the-top flipper doors
- Double-wall end panels
- Master keyed removable core locks for onsite keying
- Up to 48" - one flipper door
- 60" to 72" - two flipper doors
- Ships fully assembled

Options:

- Open shelf
- Fabric tack board
- Metal back board
- Magnetic shelf dividers
- Locks can be keyed alike

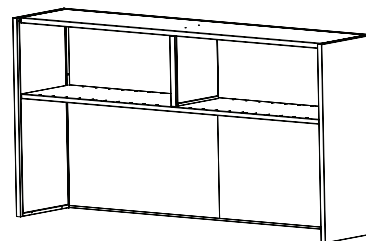
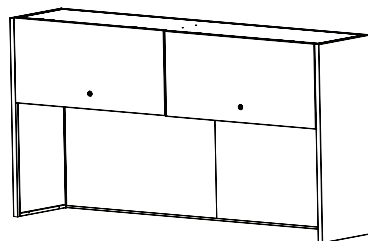
HUTCHES W/FLIPPER DOOR					Fabric Tack Board**	Metal Back Board
Model #	Size	Description	Cube	Wt.	List Price	List Price
H72F__	72" x 15"	Hutch w/locking flipper doors	23	137	\$ 1,969	\$ 2,462
H66F__	66" x 15"	Hutch w/locking flipper doors	21	125	\$ 1,827	\$ 2,284
H60F__	60" x 15"	Hutch w/locking flipper doors	19	111	\$ 1,723	\$ 2,154
H48F__	48" x 15"	Hutch w/locking flipper door	15	96	\$ 1,435	\$ 1,794
H42F__	42" x 15"	Hutch w/locking flipper door	14	91	\$ 1,350	\$ 1,688
H36F__	36" x 15"	Hutch w/locking flipper door	12	85	\$ 1,292	\$ 1,615

HUTCHES - OPEN FRONT					Fabric Tack Board**	Metal Back Board
Model #	Size	Description	Cube	Wt.	List Price	List Price
H72O__	72" x 15"	Open front hutch	23	115	\$ 1,339	\$ 1,674
H66O__	66" x 15"	Open front hutch	21	103	\$ 1,239	\$ 1,549
H60O__	60" x 15"	Open front hutch	19	91	\$ 1,161	\$ 1,451
H48O__	48" x 15"	Open front hutch	15	78	\$ 956	\$ 1,195
H42O__	42" x 15"	Open front hutch	14	73	\$ 888	\$ 1,110
H36O__	36" x 15"	Open front hutch	12	60	\$ 826	\$ 1,033

* Please specify: T=fabric tack board, M=Metal back board.

** Grade 1 fabric.

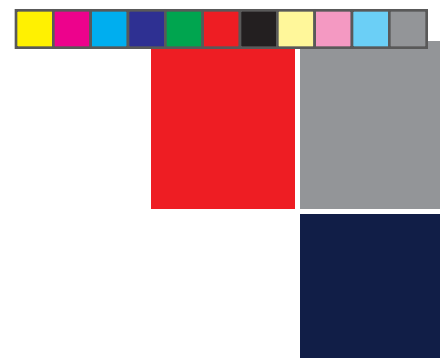
* See accessories for pricing on magnetic bookends and task lights.



All Perpetual Enterprises' products have a LIFETIME WARRANTY.



Perpetual Enterprises | 701 Fourth Avenue | Coraopolis, PA 15108
 Phone: 412-299-6356 | Fax: 412-299-6357 | www.pe-mfg.com



Overhead Storage

Features:

- 15”H x 14”D cabinet
- Wall mount brackets
- Double-panel bottom shelf
- Sliding doors
- Ships fully assembled

Options:

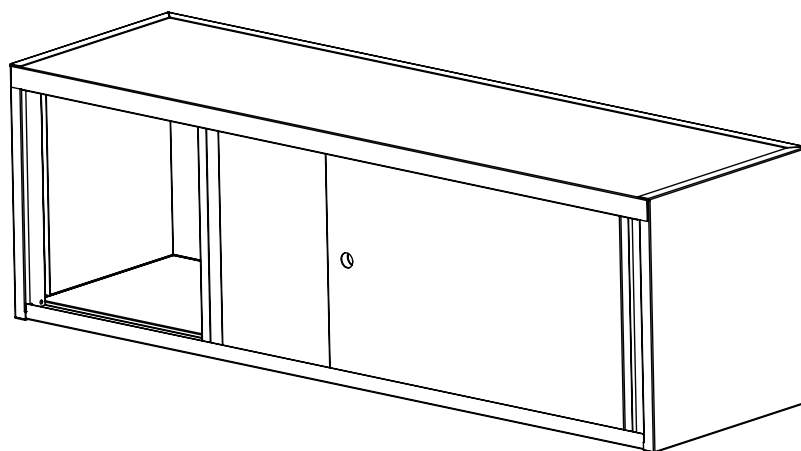
- Open shelf
- Hard-wired task light
- Magnetic shelf divider
- Push button lock
- Custom brackets to mount on panel systems

OVERHEAD STORAGE					
Model #	Size	Description	Cube	Wt.	List Price
OV72	72” x 15”	72” Overhead storage w/sliding doors	9	45	\$ 1,785
OV66	66” x 15”	66” Overhead storage w/sliding doors	8	40	\$ 1,612
OV60	60” x 15”	60” Overhead storage w/sliding doors	8	38	\$ 1,444
OV48	48” x 15”	48” Overhead storage w/sliding doors	6	30	\$ 1,280
OV42	42” x 15”	42” Overhead storage w/sliding doors	6	27	\$ 1,215
OV36	36” x 15”	36” Overhead storage w/sliding doors	5	25	\$ 1,165

* Standard w/wall-mount brackets. Please call w/specifications for panel mount brackets.

* See Accessories for pricing on magnetic shelf dividers and task lights.

* Call for pricing on additional sizes.



All Perpetual Enterprises' products have a LIFETIME WARRANTY.



Perpetual Enterprises | 701 Fourth Avenue | Coraopolis, PA 15108
 Phone: 412-299-6356 | Fax: 412-299-6357 | www.pe-mfg.com



Bookcases

Features:

- 12" and 15" deep cases
- 20-gauge case and shelves
- Adjustable, lock-in-place shelves
- Double-wall end panels
- Reinforced steel base
- Oversized adjustable glides
- Optional laminated top
- Ships fully assembled

30" WIDE HEAVY DUTY BOOKCASE

Model #	Size	Description	Cube	Wt.	List Price
BC7212-30	72" x 12"	72" Bookcase w/four adjustable and one fixed shelf	15	105	\$ 1,018
BC6012-30	60" x 12"	60" Bookcase w/three adjustable and one fixed shelf	13	75	\$ 834
BC4212-30	42" x 12"	42" Bookcase w/two adjustable and one fixed shelf	9	56	\$ 650
BC2912-30	29" x 12"	29" Bookcase w/one adjustable and one fixed shelf	6	47	\$ 455
BC7215-30	72" x 15"	72" Bookcase w/four adjustable and one fixed shelf	19	116	\$ 1,208
BC6015-30	60" x 15"	60" Bookcase w/three adjustable and one fixed shelf	16	92	\$ 1,037
BC4215-30	42" x 15"	42" Bookcase w/two adjustable and one fixed shelf	11	64	\$ 803
BC2915-30	29" x 15"	29" Bookcase w/one adjustable and one fixed shelf	6	50	\$ 482

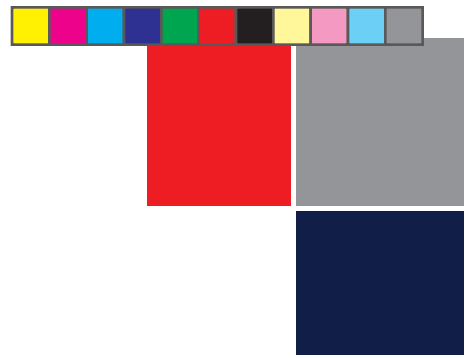
36" WIDE HEAVY DUTY BOOKCASE

Model #	Size	Description	Cube	Wt.	List Price
BC7212-36	72" x 12"	72" Bookcase w/four adjustable and one fixed shelf	19	112	\$ 1,084
BC6012-36	60" x 12"	60" Bookcase w/three adjustable and one fixed shelf	15	80	\$ 887
BC4212-36	42" x 12"	42" Bookcase w/two adjustable and one fixed shelf	11	60	\$ 693
BC2912-36	29" x 12"	29" Bookcase w/one adjustable and one fixed shelf	7	50	\$ 484
BC7215-36	72" x 15"	72" Bookcase w/four adjustable and one fixed shelf	23	124	\$ 1,285
BC6015-36	60" x 15"	60" Bookcase w/three adjustable and one fixed shelf	19	98	\$ 1,103
BC4215-36	42" x 15"	42" Bookcase w/two adjustable and one fixed shelf	11	69	\$ 854
BC2915-36	29" x 15"	29" Bookcase w/one adjustable and one fixed shelf	9	53	\$ 509

All Perpetual Enterprises' products have a LIFETIME WARRANTY.



Perpetual Enterprises | 701 Fourth Avenue | Coraopolis, PA 15108
 Phone: 412-299-6356 | Fax: 412-299-6357 | www.pe-mfg.com



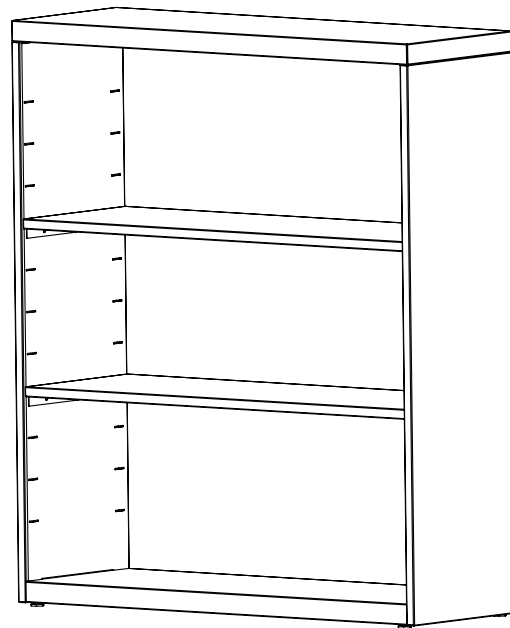
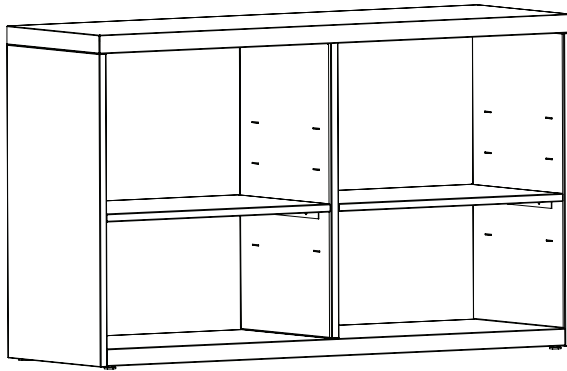
Bookcases

(continued)

48" WIDE HEAVY DUTY BOOKCASE					
Model #	Size	Description	Cube	Wt.	List Price
BC3012-48	30" x 12"	48" bookcase w/one center partition. One adjustable and one fixed shelf on each side of partition.	13	63	\$ 744
BC3015-48	30" x 15"	48" bookcase w/one center partition. One adjustable and one fixed shelf on each side of partition.	13	63	\$ 744

* Call for custom sizes.

* Call for pricing on laminated tops.

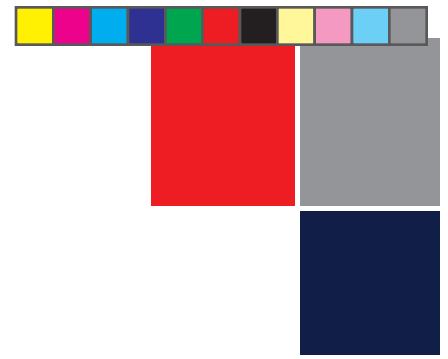


All Perpetual Enterprises' products have a LIFETIME WARRANTY.





Vertical Files



Features:

- Non-defeatable standard safety interlock system
- 28" deep cases
- Heavy gauge steel, one-piece wrappers
- Four-vertical uprights
- Reinforced steel base
- 17-gauge drawer fronts with full width integral pulls
- Drawers are high-sided to accept hanging file folders
- Full-extension steel ball bearing suspension w/anti-rebound mechanism
- Master keyed removable core locks for onsite keying
- Oversized adjustable glides
- Ships fully assembled

Options:

- Laminated top
- Locks can be keyed alike
- ADA drawer pulls
- Counter-balance kit

HEAVY DUTY VERTICAL FILE CABINETS - LETTER

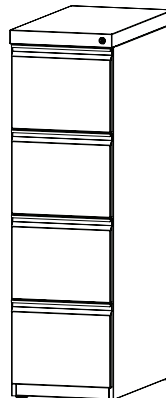
Model #	Size	Description	Cube	Wt.	List Price
VFL-1153	62" x 15"	Five-drawer file, locking w/safety interlock	15	150	\$ 1,610
VFL-1143	52" x 15"	Four-drawer vertical file, locking w/safety interlock	13	121	\$ 1,360
VFL-1133	40" x 15"	Three-drawer vertical file, locking w/safety interlock	10	95	\$ 1,092
VFL-1123	28" x 15"	Two-drawer vertical file, locking w/safety interlock	7	70	\$ 855
CWLTR		Counter-balance kit			\$ 243

HEAVY DUTY VERTICAL FILE CABINETS - LEGAL

Model #	Size	Description	Cube	Wt.	List Price
VFL-1453	62" x 18"	Five-drawer vertical file locking w/safety interlock	18	157	\$ 1,669
VFL-1443	52" x 18"	Four-drawer vertical file locking w/safety interlock	15	132	\$ 1,412
VFL-1433	40" x 18"	Three-drawer vertical file locking w/safety interlock	12	101	\$ 1,147
VFL-1423	28" x 18"	Two-drawer vertical file locking w/safety interlock	8	77	\$ 887
CWLGL		Counter-balance kit			\$ 243

* Safety interlock is standard.

* Call for custom sizes.



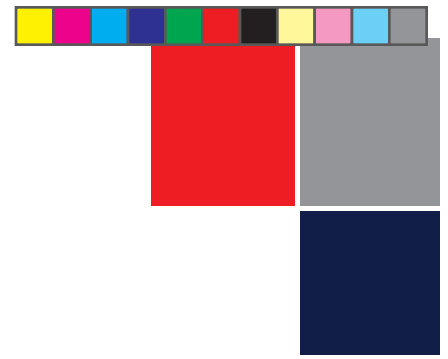
All Perpetual Enterprises' products have a LIFETIME WARRANTY.



Perpetual Enterprises | 701 Fourth Avenue | Coraopolis, PA 15108
 Phone: 412-299-6356 | Fax: 412-299-6357 | www.pe-mfg.com



Lateral Files



Features:

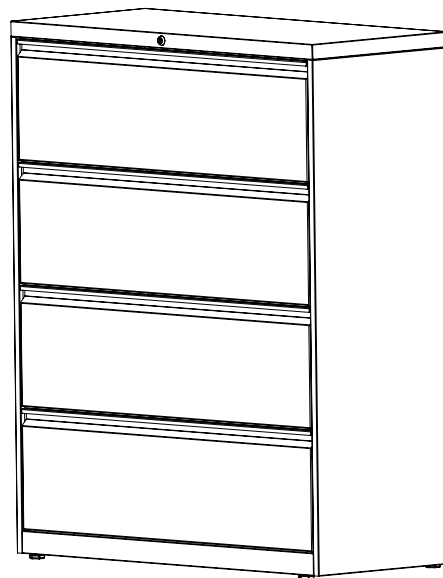
- Non-defeatable standard safety interlock system
- Heavy gauge steel case wrappers
- Four-vertical uprights
- Reinforced steel base
- 20-gauge drawer fronts with full width integral pulls
- Drawers are high-sided to accept hanging file folders
- Side-to-side bars to accommodate hanging file folders
- Full-extension steel ball bearing suspension w/anti-rebound mechanism
- Master keyed removable core locks for onsite keying
- Oversized adjustable glides
- Ships fully assembled

Options:

- Laminated top
- Locks can be keyed alike
- ADA drawer pulls
- Counter-balance kit

42" WIDE HEAVY DUTY LATERAL FILES

Model #	Size	Description	Cube	Wt.	List Price
MLF4252	63 1/2" x 18"	Five-drawer lateral file w/standard safety interlock	28	232	\$ 2,706
MLF4242	51 1/2" x 18"	Four-drawer lateral file w/standard safety interlock	23	227	\$ 2,279
MLF4232	39 1/2" x 18"	Three-drawer lateral file w/standard safety interlock	18	180	\$ 1,821
MLF4222	27 1/2" x 18"	Two-drawer lateral file w/standard safety interlock	12	154	\$ 1,386
CW42		Counter-balance kit			\$ 222



All Perpetual Enterprises' products have a LIFETIME WARRANTY.

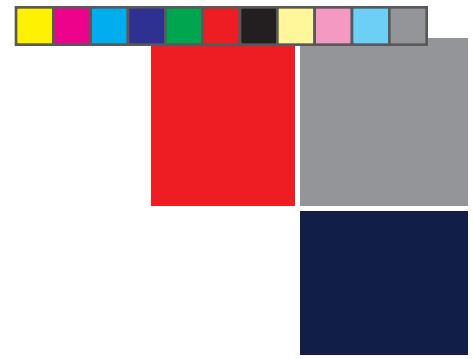


Perpetual Enterprises | 701 Fourth Avenue | Coraopolis, PA 15108
 Phone: 412-299-6356 | Fax: 412-299-6357 | www.pe-mfg.com



Lateral Files

(continued)



36" WIDE HEAVY DUTY LATERAL FILES

Model #	Size	Description	Cube	Wt.	List Price
MLF3652	63 1/2" x 18"	Five-drawer lateral file w/standard safety interlock	24	211	\$ 2,292
MLF3642	51 1/2" x 18"	Four-drawer lateral file w/standard safety interlock	20	186	\$ 2,036
MLF3632	39 1/2" x 18"	Three-drawer lateral file w/standard safety interlock	15	168	\$ 1,605
MLF3622	27 1/2" x 18"	Two-drawer lateral file w/standard safety interlock	10	140	\$ 1,204
CW36		Counter-balance kit			\$ 206

30" WIDE HEAVY DUTY LATERAL FILES

Model #	Size	Description	Cube	Wt.	List Price
MLF3052	63 1/2" x 18"	Five-drawer lateral file w/standard safety interlock	20	201	\$ 2,132
MLF3042	51 1/2" x 18"	Four-drawer lateral file w/standard safety interlock	16	168	\$ 1,788
MLF3032	39 1/2" x 18"	Three-drawer lateral file w/standard safety interlock	13	152	\$ 1,442
MLF3022	27 1/2" x 18"	Two-drawer lateral file w/standard safety interlock	9	131	\$ 1,090
CW30		Counter-balance kit			\$ 179

LATERAL FILE ACCESSORIES

Model #	Description	List Price
FTBR42	Front-to-back-bars (6/set)	\$ 87
FTBR36	Front-to-back-bars (4/set)	\$ 59
FTBR30	Front-to-back-bars (4/set)	\$ 59
MLH	Magnetic label holders (package of 5)	\$ 35

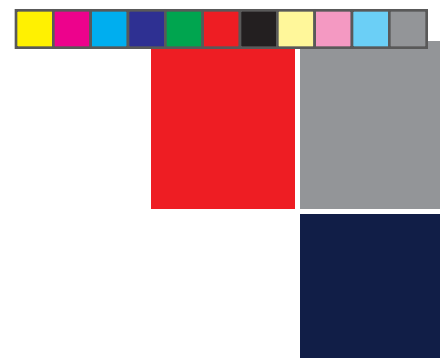
* Call for custom sizes.

* Call for pricing on laminated tops.

All Perpetual Enterprises' products have a LIFETIME WARRANTY.

Perpetual Enterprises | 701 Fourth Avenue | Coraopolis, PA 15108
 Phone: 412-299-6356 | Fax: 412-299-6357 | www.pe-mfg.com

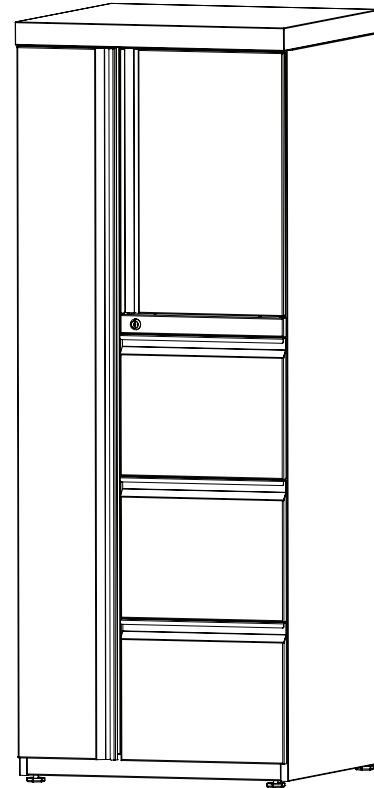




Storage Towers

Features:

- 2 or 3 file drawers
- Heavy gauge steel case
- Four-vertical uprights
- Reinforced steel base
- 17-gauge drawer and door fronts
- Heavy-duty adjustable hinges
- Full-extension steel ball bearing suspension w/anti-rebound mechanism
- Single-point locking
- Master keyed removable core locks for onsite keying
- Garment rod
- Oversized adjustable glides
- Ships fully assembled



STORAGE TOWERS					
Model #	Size	Description	Cube	Wt.	List Price
ST6424L-3	64" x 24" x 24"	Storage tower w/wardrobe left, three file drawers and one cabinet w/one adjustable shelf, right	22	178	\$ 2,562
ST6424R-3	64" x 24" x 24"	Storage tower w/wardrobe right, three file drawers and one cabinet w/one adjustable shelf left	22	178	\$ 2,562
ST6424L-2	64" x 24" x 24"	Storage tower w/wardrobe left, two file drawers and one cabinet w/two adjustable shelves, right	22	170	\$ 2,479
ST6424R-2	64" x 24" x 24"	Storage tower w/wardrobe right, two file drawers and one cabinet w/two adjustable shelves left	22	170	\$ 2,479

*Four-drawer storage towers are available.

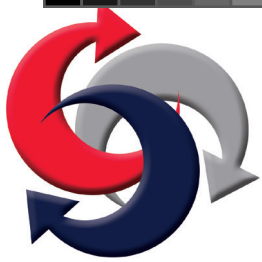
*Custom towers available.

*Call for more information and pricing.

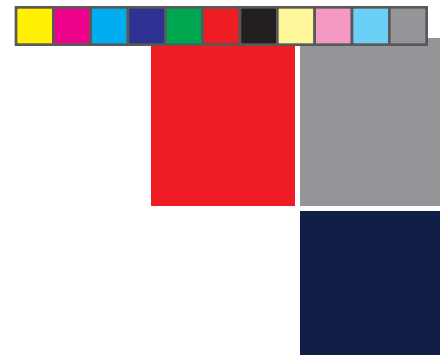
All Perpetual Enterprises' products have a LIFETIME WARRANTY.



Perpetual Enterprises | 701 Fourth Avenue | Coraopolis, PA 15108
 Phone: 412-299-6356 | Fax: 412-299-6357 | www.pe-mfg.com



STOW^{PRO} Lockers

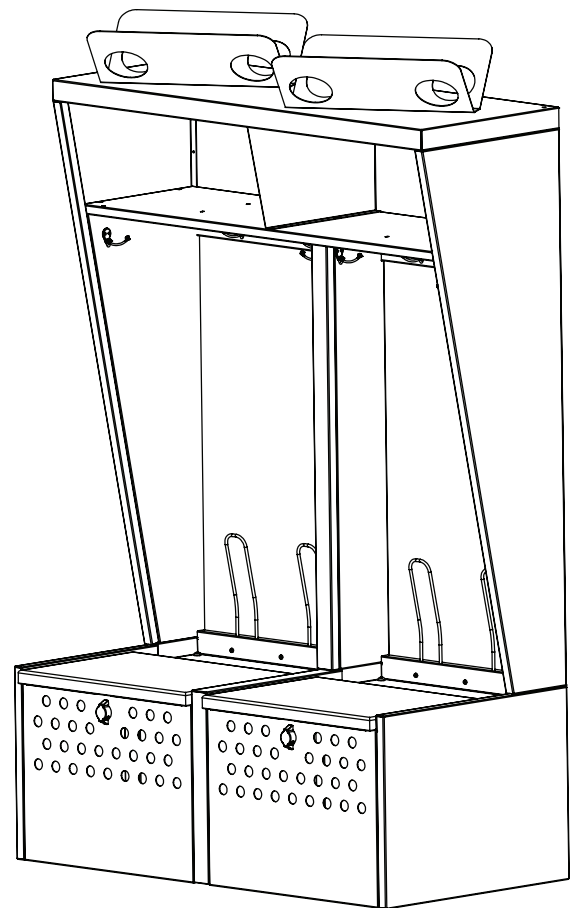
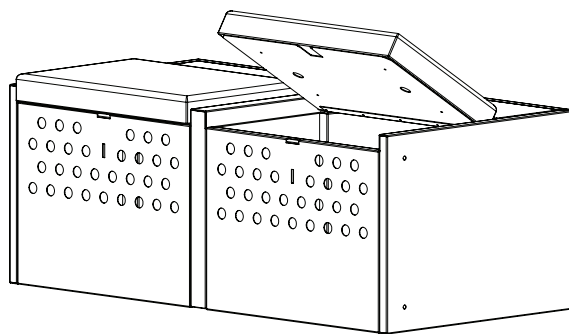


Features:

- Single and double seats
- 72" high
- 16-gauge steel construction
- 18" H bench w/1 1/4" solid maple seat and a multi-coat catalyzed finish
- Ships fully assembled

Options:

- Two-color customized design scheme
- Drying rack and shoe trees
- Top-shelf strong box for additional security
- Lid stays for controlled seat closure



SINGLE SEAT LOCKERS					
Model #	Size	Description	Cube	Wt.	List Price
SP30	30" x 72" x 24"	30"W single locker w/wood seat, cam lock and four double hooks	30	180	\$ 2,015
SP24	24" x 72" x 24"	24"W single locker w/wood seat, cam lock and four double hooks	24	145	\$ 1,834
SP21	21" x 72" x 24"	21"W single locker w/wood seat, cam lock and three double hooks	21	128	\$ 1,707
SP18	18" x 72" x 24"	18"W single locker w/wood seat, cam lock and three double hooks	18	109	\$ 1,642

*Please call for custom sizes.

All Perpetual Enterprises' products have a LIFETIME WARRANTY.

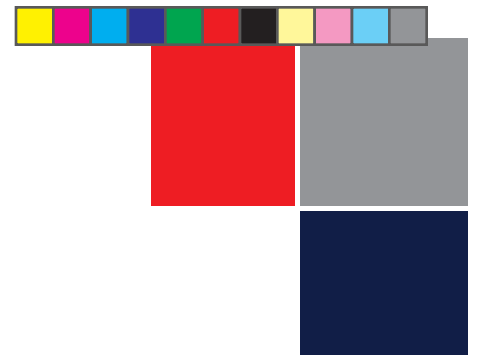


Perpetual Enterprises | 701 Fourth Avenue | Coraopolis, PA 15108
 Phone: 412-299-6356 | Fax: 412-299-6357 | www.pe-mfg.com



STOW^{PRO} Lockers

(continued)



DOUBLE SEAT LOCKERS

Model #	Size	Description	Cube	Wt.	List Price
SP48	48" x 72" x 24"	48"W double locker w/wood seats, cam locks and eight-double hooks	48	295	\$ 3,138
SP42	42" x 72" x 24"	42"W double locker w/wood seats, cam locks and six-double hooks	42	258	\$ 3,033
SP36	36" x 72" x 24"	36"W double locker w/wood seats, cam locks and six-double hooks	36	220	\$ 2,954

LOCKER ACCESSORIES

Model #	Size	Description	Cube	Wt.	List Price
SPSB		Security box	N/A		\$ 144
SPSR		Shoulder pad rack	N/A		\$ 48
SPST		Shoe trees (pair)	N/A		\$ 37
SPGB		Ganging bracket w/bolts	N/A		\$ 19

SINGLE STORAGE BENCH

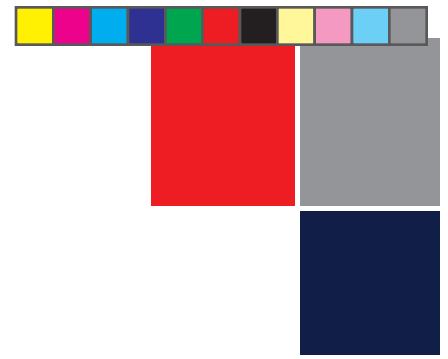
Model #	Size	Description	Cube	Wt.	List Price
BL30	30" x 18" x 24"	30"W single storage bench w/wood seat and cam lock	8	56	\$ 1,133
BL24	24" x 18" x 24"	24"W single storage bench w/wood seat and cam lock	6	45	\$ 1,034
BL21	21" x 18" x 24"	21"W single storage bench w/wood seat and cam lock	6	40	\$ 960
BL18	18" x 18" x 24"	18"W single storage bench w/wood seat and cam lock	5	34	\$ 919

DOUBLE STORAGE BENCH

Model #	Size	Description	Cube	Wt.	List Price
BL48	48" x 18" x 24"	48"W double storage bench w/wood seats and cam locks	12	90	\$ 1,614
BL42	42" x 18" x 24"	42"W double storage bench w/wood seats and cam locks	11	79	\$ 1,510
BL36	36" x 18" x 24"	36"W double storage bench w/wood seats and cam locks	9	68	\$ 1,432

All Perpetual Enterprises' products have a LIFETIME WARRANTY.





Pedestal Table Series

Features:

- 29" high w/adjustable glides
- 1 1/8" high-pressure laminated top w/3mm PVC edgeband
- Radius corners are standard
- Unlimited shapes and sizes
- 14-gauge powder coated bases
- Some assembly required

Options:

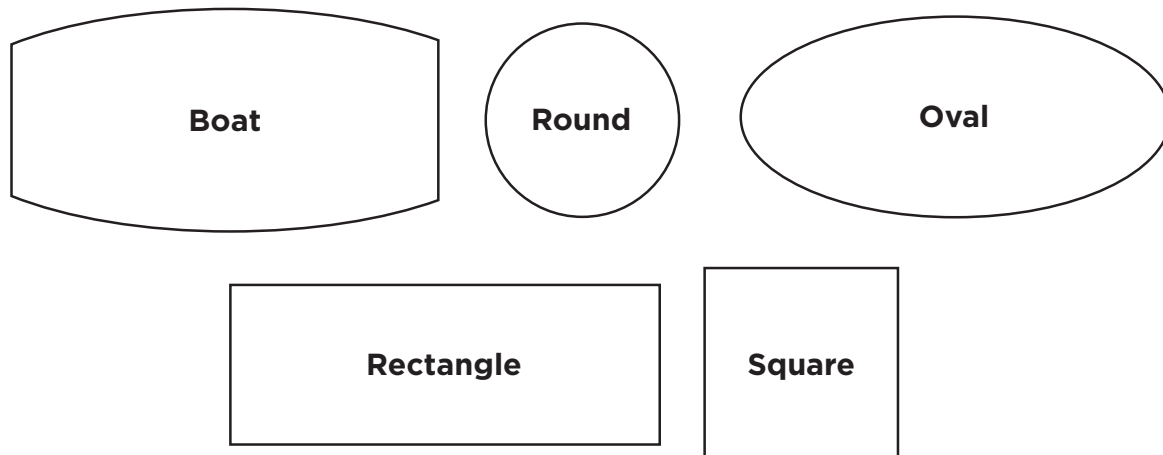
- Folding leg base
- Adjustable height base
- Flip-top base
- Power and data management
- Modesty panel
- Casters

SQUARE LAMINATED TOP - STATIONARY "X" BASE

Model #	Size	Description	Cube	Wt.	List Price
CPT36SQ-32X	36" x 36"	32" X-Base	13	70	\$ 907
CPT30SQ-26X	30" x 30"	26" X-Base	11	54	\$ 859

ROUND LAMINATED TOP - STATIONARY "X" BASE

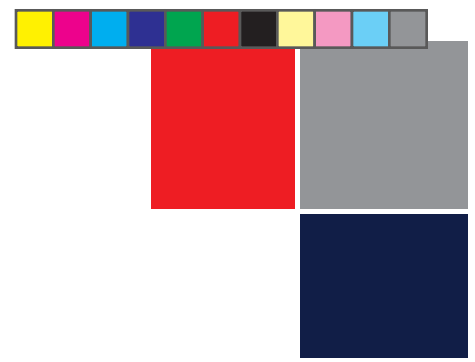
Model #	Size	Description	Cube	Wt.	List Price
CPT60RD-38X	60" Round	38" X-Base	18	110	\$ 1,534
CPT48RD-38X	48" Round	38" X-Base	15	93	\$ 1,274
CPT42RD-32X	42" Round	32" X-Base	14	73	\$ 1,227
CPT36RD-32X	36" Round	32" X-Base	13	60	\$ 914
CPT30RD-26X	30" Round	26" X-Base	11	48	\$ 872



All Perpetual Enterprises' products have a LIFETIME WARRANTY.



Perpetual Enterprises | 701 Fourth Avenue | Coraopolis, PA 15108
 Phone: 412-299-6356 | Fax: 412-299-6357 | www.pe-mfg.com



Pedestal Table Series

(continued)

RECTANGULAR LAMINATED TOP - STATIONARY "T" BASES

Model #	Size	Description	Cube	Wt.	List Price
CPT7230-26T	72" x 30"	2 - 26" T-Bases	12	104	\$ 1,364
CPT6630-26T	66" x 30"	2 - 26" T-Bases	11	96	\$ 1,357
CPT6030-26T	60" x 30"	2 - 26" T-Bases	10	92	\$ 1,285
CPT4830-26T	48" x 30"	2 - 26" T-Bases	8	80	\$ 1,199
CPT6024-20T	60" x 24"	2 - 20" T-Bases	9	78	\$ 1,219
CPT4824-20T	48" x 24"	2 - 20" T-Bases	8	69	\$ 1,139
CPT3624-20T	36" x 24"	2 - 20" T-Bases	7	60	\$ 1,037
CPT6018-16T	60" x 18"	2 - 16" T-Bases	9	65	\$ 1,207
CPT4818-16T	48" x 18"	2 - 16" T-Bases	8	58	\$ 1,123

CUSTOM PEDESTAL TABLES

Model #	Size	Description	Cube	Wt.	List Price
CPT_____ - _____	Varies	Describe laminated top size and shape, base type and size, and number of bases	TBD	TBD	\$

- * Space 1-4 denotes size and shape of table top. Round: size/RD, Square: size/SQ, Rectangle: size/size.
- * Space 5-7 denotes size and type of standard base: T=T-shaped base, X=X-shaped base.
- * Call for all custom information and pricing.
- * All laminate types and patterns must be selected from a qualified laminate manufacturer.
- * All bases, standard and custom, must meet minimum dimensions for top size.
- * Specify color and finish of base.

Examples:

CPT7236-26T — 72" x 36" rectangular table w/2-26" T bases.

CPTSQ38-26X — 38" square table w/26" X base.

CPTRD40-32X — 40" round table w/32" X base.

All Perpetual Enterprises' products have a LIFETIME WARRANTY.



LIFETIME WARRANTY

Perpetual Enterprises, Inc.

WARRANTY STATEMENT

A. The following warranty applies to products manufactured by Perpetual Enterprises, Inc. This warranty is given to the initial purchaser and is valid for as long as the product is owned by the original buyer. The warranty, which runs from the date of manufacture, covers defects in materials and craftsmanship found during normal usage of product (s) during the warranty period. If a product is defective, and if written notice of the defect is given to the Company **within** the applicable warranty period, the Company will either repair or replace the defective product with a comparable component or product. The Applicable Warranty Periods are:

Product (s)

All Products

Applicable Warranty Period

Lifetime*

*The applicable warranty period assumes that the product is used an average of not more than 40 hours per week. If a product is used more than this, the Applicable Warranty Period shall be reduced in proportion to the increased usage.

B. This warranty does not apply to “normal wear and tear”, abuse, damage caused by a carrier, damage caused by transport of product from one site or location to another, alterations to the product not expressly authorized by Seller, nor to products considered to be of a consumable nature such as light bulbs, light ballasts and surge suppression products. It also does not apply to “Customers Own Material (i.e., material specified by Buyer that is not a standard Company product offering used in the manufacture of the Company’s products. The Company does not warrant the matching of color, grain or texture except to within commercially acceptable standards.

C. A product will not be considered defective, and Seller will not be obligated to replace it, if the product is not installed or used as recommended in the Company’s written planning, installation or user guides.

D. Except as stated above, the Company makes no expressed or implied warranties as to any product and in particular makes no warranty or fitness for any particular product except for use as standard office furniture. Product repair or replacement is the customer’s exclusive remedy for any and all product defects. Seller shall not be liable for consequential, economic or incidental damages arising from any product defect.